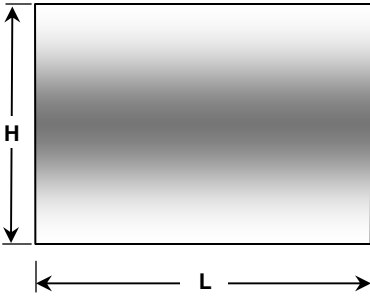


MENISCUS CYLINDRICAL LENSES

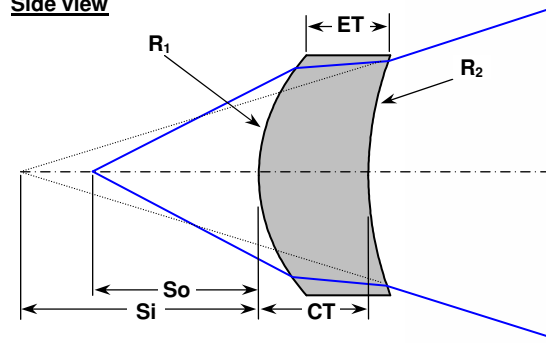
SURFACE 1 : PURE RADIUS
SURFACE 2 : PURE RADIUS

LENS DRAWING

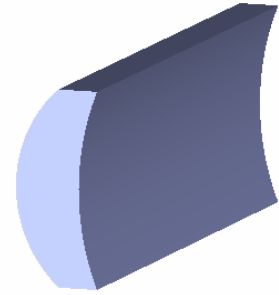
Front view



Side view



3D view

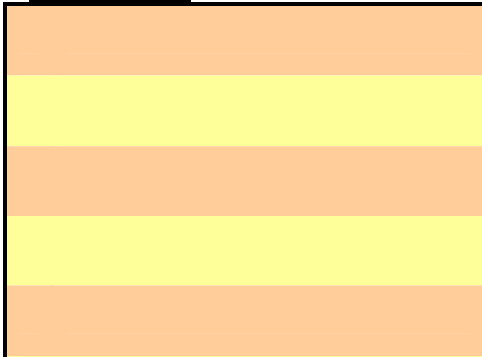


LENS DESIGN INFORMATIONS

Ordering Code CYL_MEN_MAT_R1_R2_H_CT_L_AR(λ_1 - λ_2)	Paraxial data ^{1,2}	Dimensions ¹			Surfaces data ¹	
	EFL	H	CT	L	1 R ₁	2 R ₂
Material: Fused silica						
Use ordering code						
or contact us for details at:						
sales@doriclenses.com						
Material: BK7						
Use ordering code						
or contact us for details at:						
sales@doriclenses.com						

1. All units are mm
2. Given at $\lambda = 632.8$ nm.

Useful formulae



Legend

EFL: Effective focal length NA: Numerical aperture WD: Working distance D: Beam diameter Φ : Rod diameter R: Radius of curvature
H: Lens height CT: Central thickness L: Rod length n: Refractive index AR($\lambda_1 - \lambda_2$): Anti-reflection coating wavelength range

