

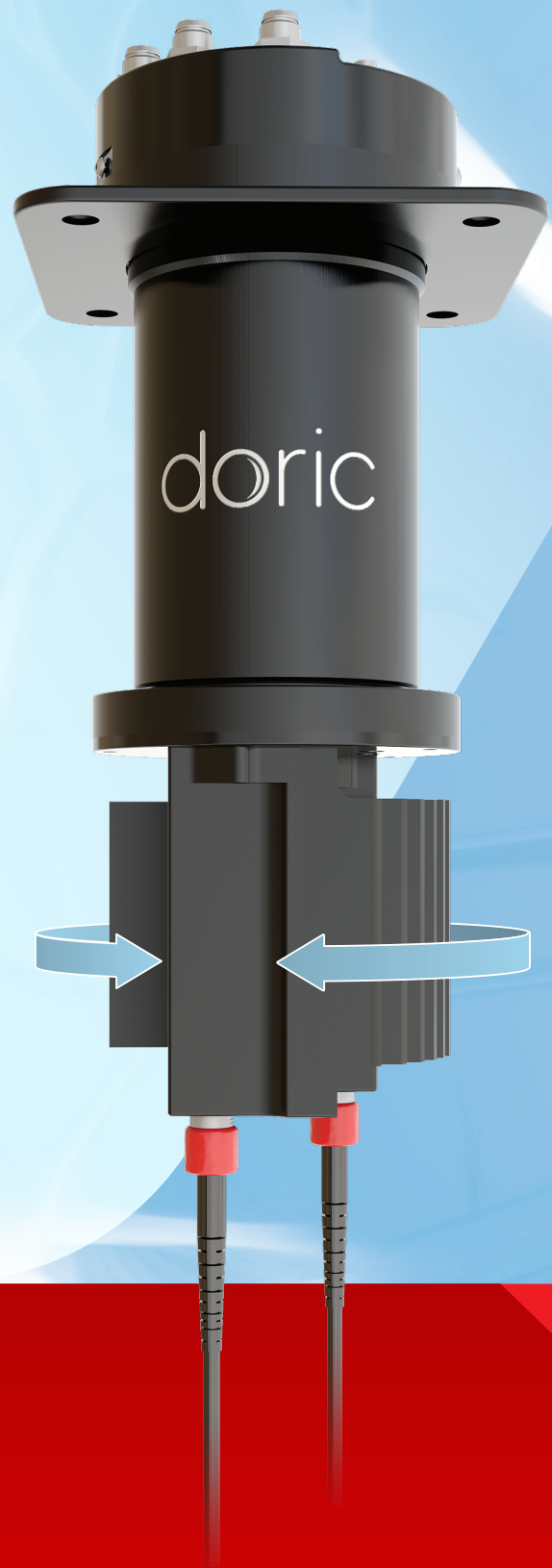


doric  
**NEURO**

## Rotary Fluorescence Mini Cube

An entire 2-site fiber  
photometry system  
mounted on an assisted  
electrical rotary joint.

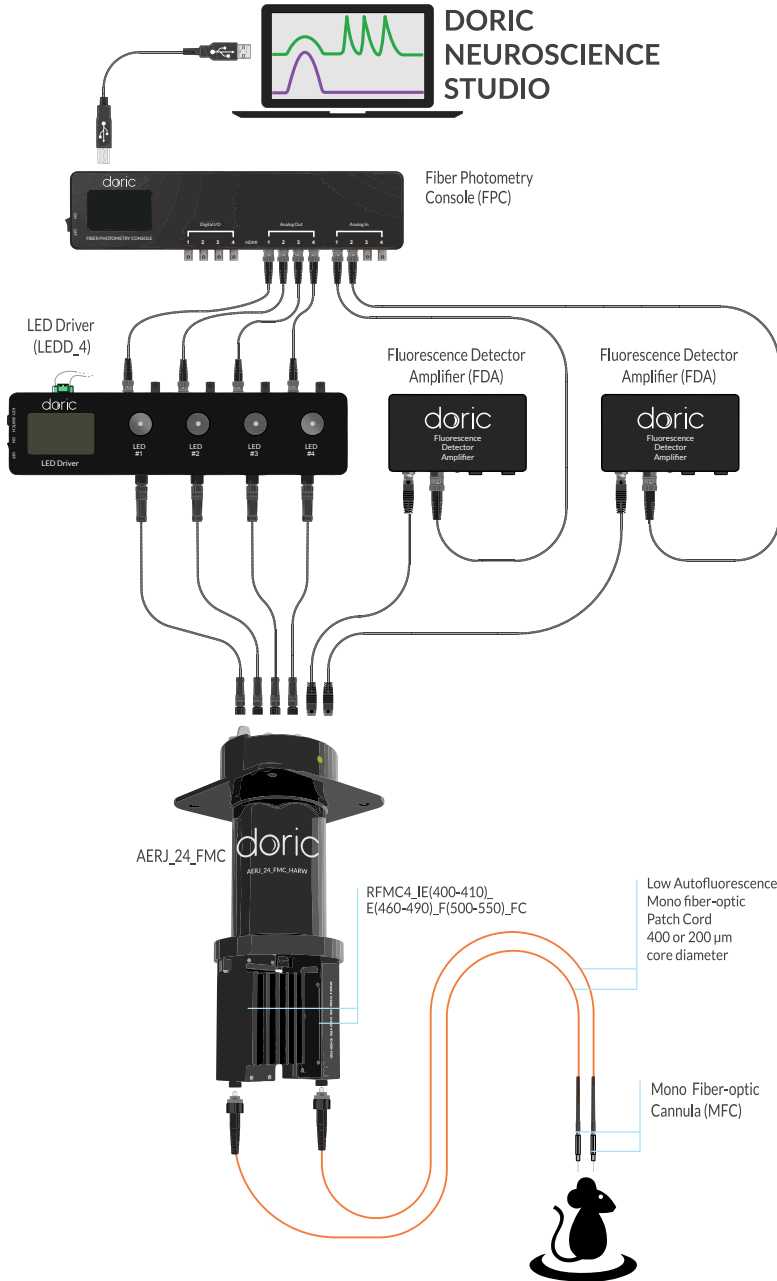
- No rotation-related  
signal variation
- Increased sensitivity
- Compatible with  
lock-in detection



[doriclenses.com](http://doriclenses.com)



doric



GCaMP Isosbestic and Functional Excitations.

## 2-site 2-color Fiber Photometry System with Rotary Fluorescence Mini Cube.

## Features

- Integrated fiber photometry mini cube mounted on a rotary joint
  - Interchangeable and replaceable
- No rotation induced optical signal variation
- Integrated low-power LED light sources ideal for fiber photometry
- Increased sensitivity thanks to integrated amplified photodiode
- Increased signal
  - Reduced number of optical connections
- Compatible with lock-in detection
- Assisted electrical rotary joint suitable for mice
- Hollow core for additional channels
  - Fluid delivery
  - Optogenetic activation
  - Third fiber photometry site

### AVAILABLE ROTARY FLUORESCENCE MINI CUBES

RFMC3 • GFP-like, RFP-like

RFMC4 • GCaMP Isosbestic and Functional Excitations  
• FRET Cube (One Excitation and Two Fluorescence Detection Ports)

RFMC6 • Two Fluorophore Fluorescence and GCaMP Isosbestic Excitation