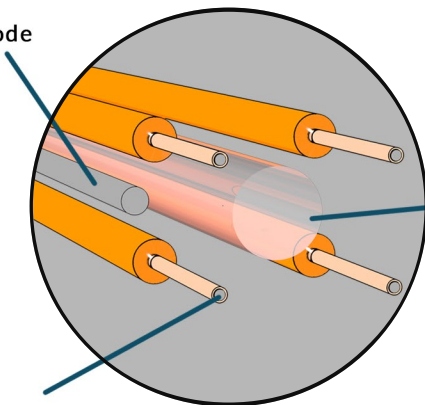


OPTO - ELECTRIC CANNULAS

Custom optical fiber and electrode configurations

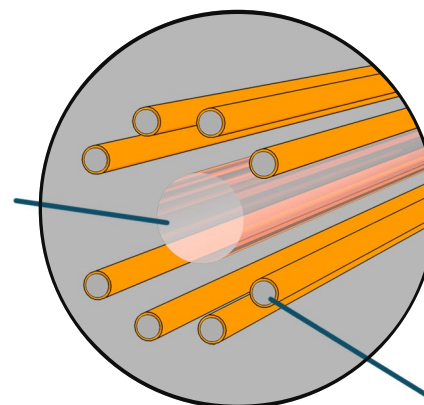
Intracranial reference electrode



Recording electrode
ID: 25 μm / OD: 35 μm

Optical fiber
200 / 250 μm
NA=0.66

Extracranial reference electrode



Recording electrode
ID: 50 μm / OD: 66 μm

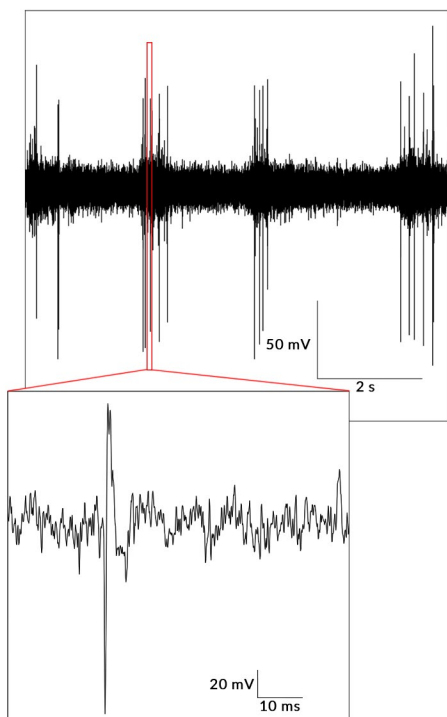
Electrophysiological recording electrodes

25 μm diameter

Head-fixed and chronic recordings

- Tungsten electrodes coated with polyimide
- Single- and multi-unit recordings
- Impedance: 0.7-1.2 M Ω
- Flat recording tips
- Packaged in a glass tube for rigidity

Electrophysiological recordings in CA3, head-fixed mouse



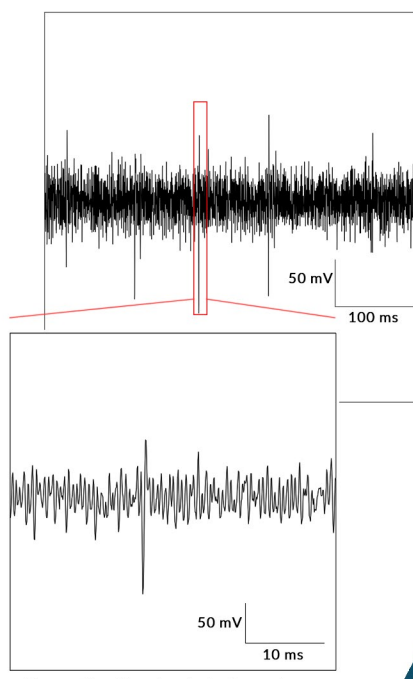
Yves De Koninck Laboratory

50 μm diameter

Chronic recordings

- Tungsten electrodes coated with polyimide
- Multi-unit and local field potential recordings
- Impedance: 0.2-0.3 M Ω
- Flat recording tips

Electrophysiological recordings in frontal cortex (wireless), chronically implanted mouse



Yves De Koninck Laboratory

Stimulation electrodes

100 μm diameter



Electrical stimulation

- Platinum / Iridium material
Pt (80%) / Ir (20%)
- Impedance: 15-30 k Ω

www.doriclenses.com

doric

OPTO - ELECTRIC CANNULAS

For electrophysiological recording

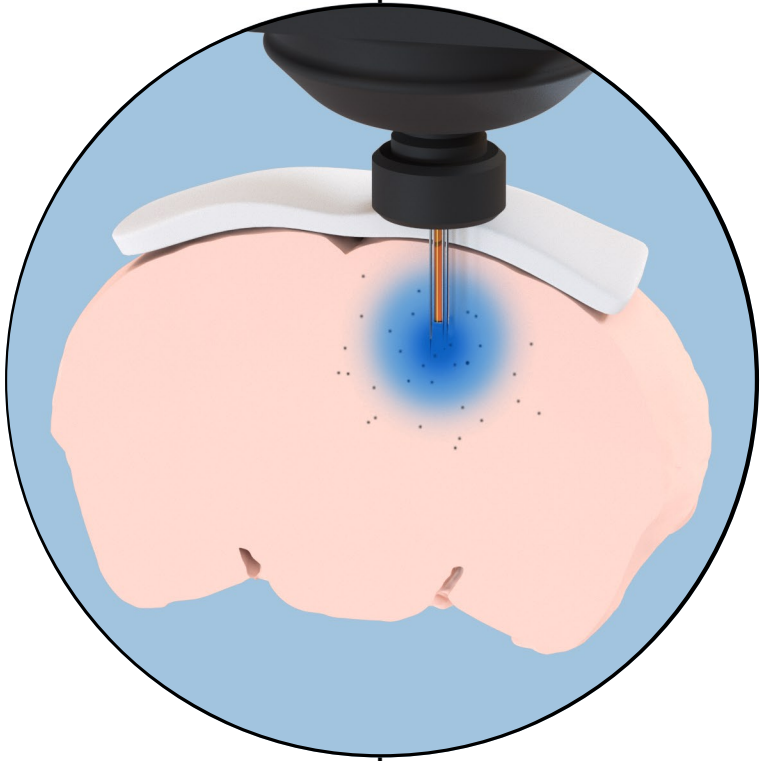
For electrophysiological stimulation



OEC - Up to 16 recording electrodes



OEC - Up to 32 recording electrodes



OEC - 2 stimulation electrodes



OEC - 4 stimulation electrodes

