

doric

***danse*<sup>TM</sup>: Data Analyzer for NeuroScience Experiments**

Installation Manual

Version 1.0.0

---

## Contents

<b>1 About</b>	<b>3</b>
<b>2 Software Installation and Updates</b>	<b>4</b>
2.1 Installation . . . . .	4
2.2 Licence Activation . . . . .	9
2.3 Software Update . . . . .	11
<b>3 Getting Started</b>	<b>12</b>
3.1 Opening modules . . . . .	12
3.2 Help functionalities . . . . .	12
<b>4 Specifications</b>	<b>14</b>
<b>5 Support</b>	<b>15</b>
5.1 Contact us . . . . .	15

## About

*Danse*<sup>TM</sup> is a neuroscience data analysis software covering the entire pipeline from raw data visualization, processing, and analysis. *Danse*<sup>TM</sup> is designed to analyze data acquired from a Doric *Fiber Photometry Console*, *Bundle-imaging fiber photometry*, *Miniature fluorescence microscopy*, *Electrophysiology console*, *Optogenetics TTL pulse generator*, and *Behavior camera*. In addition, *danse*<sup>TM</sup> can integrate behavior videos, events (e.g. stimuli, immobility bouts), and measures (e.g. animal position, speed) from external sources. It is also possible to convert neural data files recorded from other devices to .doric format.

### Features:

- Seamlessly combines behavior and neural activity together for analysis
- Simplifies data management
- Streamlines experiment analysis
- Compatible with other behavior software
- No coding required

\*\*\* Contact [support@doriclenses.com](mailto:support@doriclenses.com) to learn whether converting neural data files recorded from other devices to .doric format is possible. \*\*\*

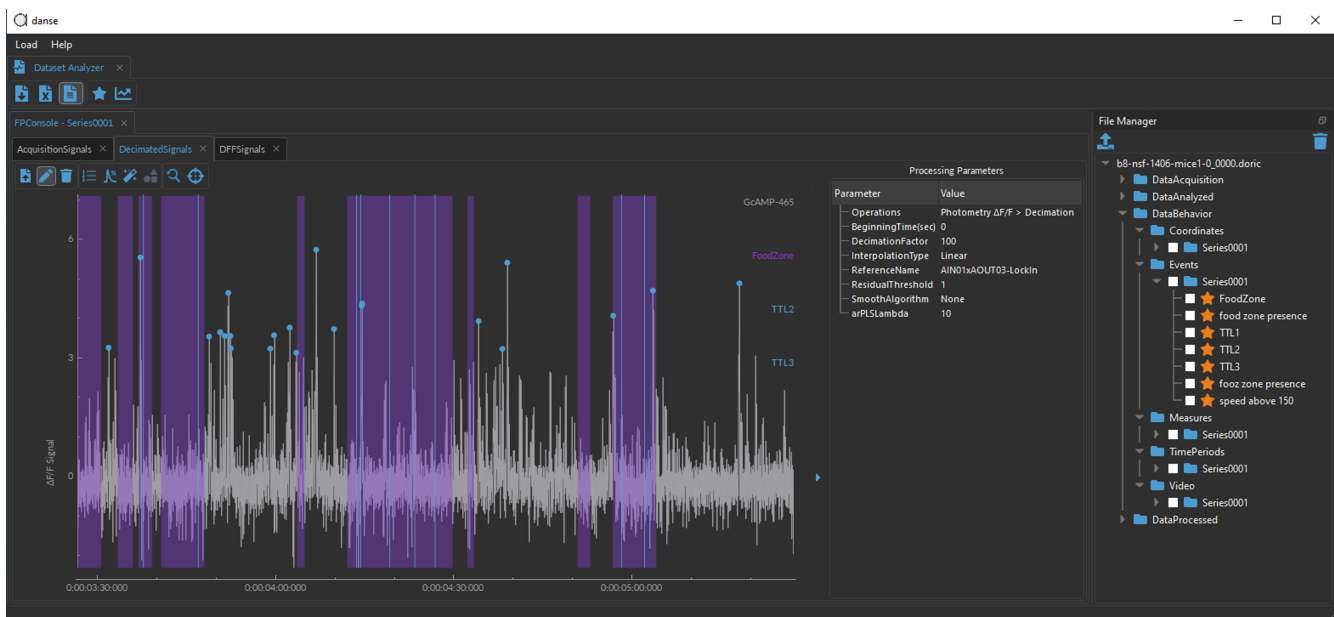


Figure 1.1: *danse*<sup>TM</sup> interface

## Software Installation and Updates

### 2.1 Installation

1. **Download** the latest version of the software from our *danse*<sup>TM</sup> webpage. See Table 4.1 for computer requirements.
2. **Run** the downloaded .exe file to launch the set-up window. Note that at all times, two software versions are available: a stable version, which is thoroughly tested, and a beta version, where new features are being tested.
3. **Select** the language to use during the installation. The following instructions will cover how to do the installation in English.

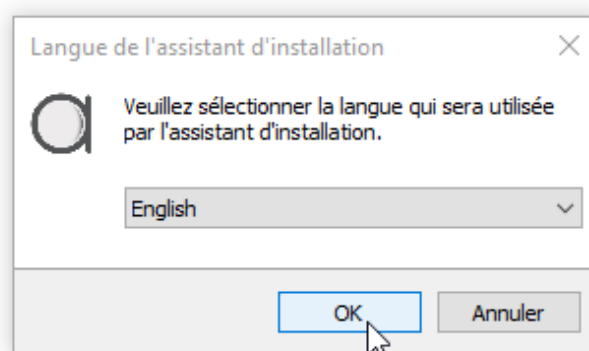


Figure 2.1: Select Language

**Note:** If a previous version of *danse*<sup>TM</sup> is already installed (Fig. 2.2), you must first uninstall the previous version before installing the new one (see Section 2.3).

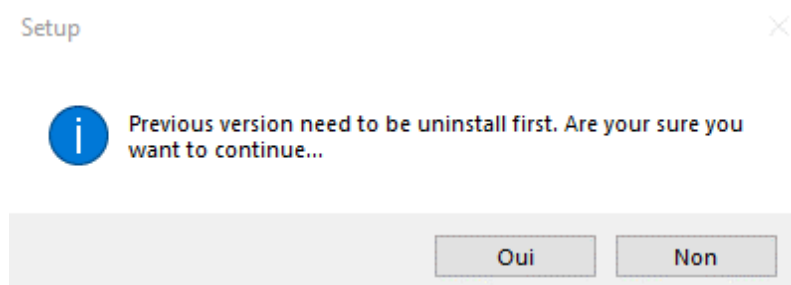


Figure 2.2: Uninstall previous version of software

4. Click **Next** in the Information window (Fig 2.3).

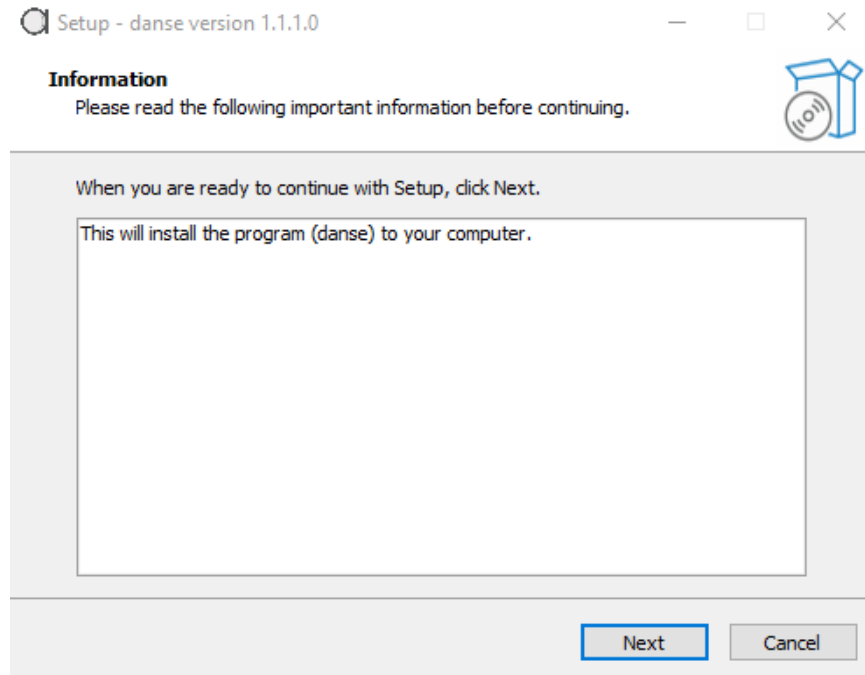


Figure 2.3: Read & Select NEXT

5. **Choose** where to install the software and click **Next** (Fig. 2.4).

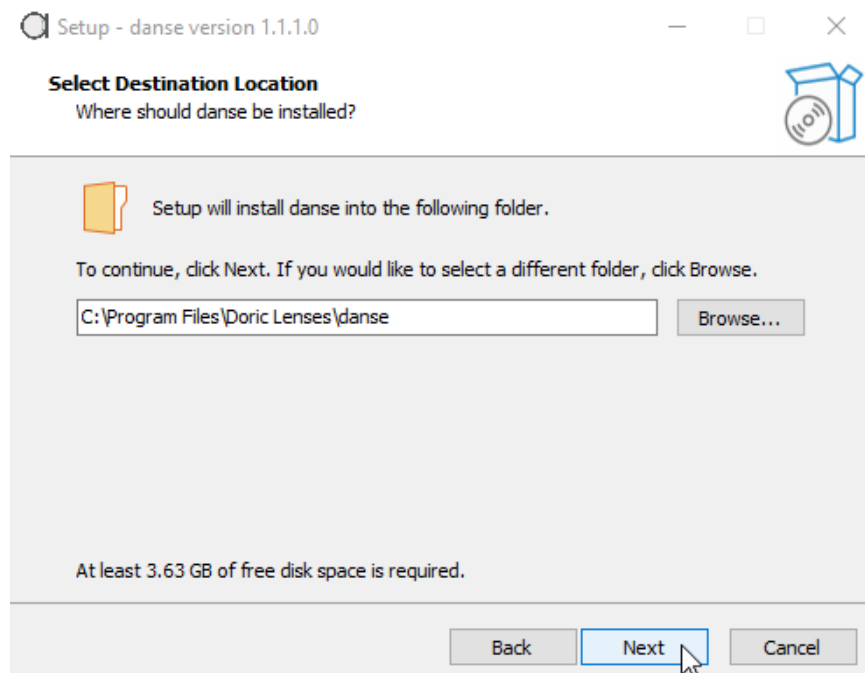


Figure 2.4: Select Destination Location

6. **Choose**, if desired, to create a shortcut in the Start Menu folder and click **Next** (Fig. 2.5).

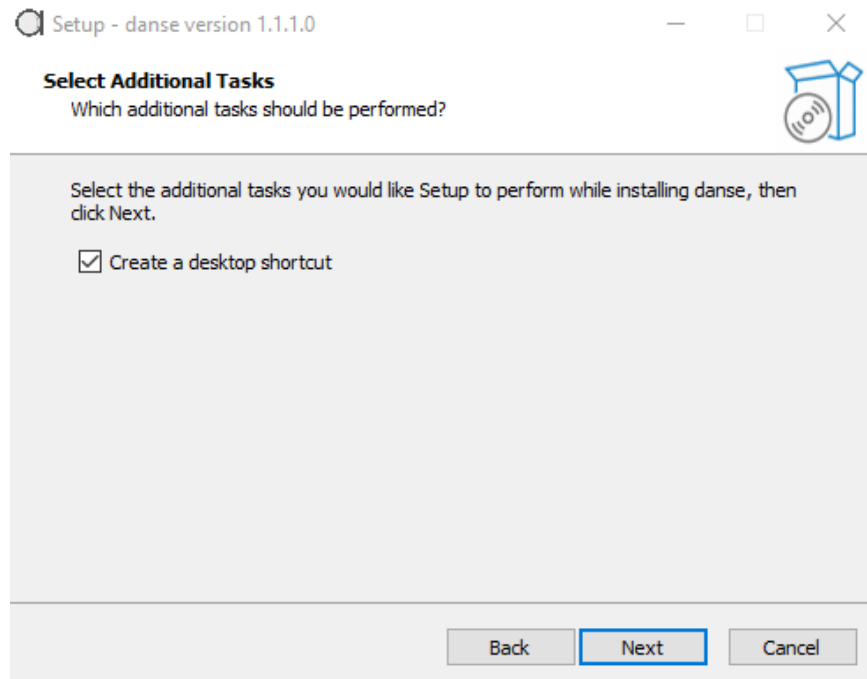


Figure 2.5: Select Additional Tasks

7. **Select** the Start Menu Folder where the program shortcut will be placed, then click **Next** (Fig. 2.6).

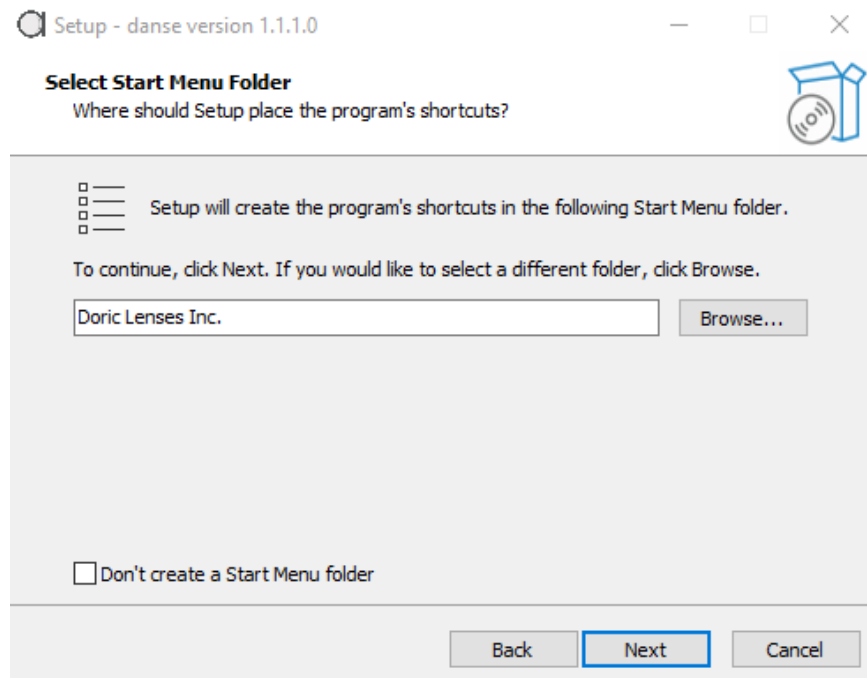


Figure 2.6: Select Start Menu

8. When ready, click **Install** to begin the process (Fig. 2.7). Wait until the loading bar reaches completion (Fig. 2.8). This should take a few minutes at most.

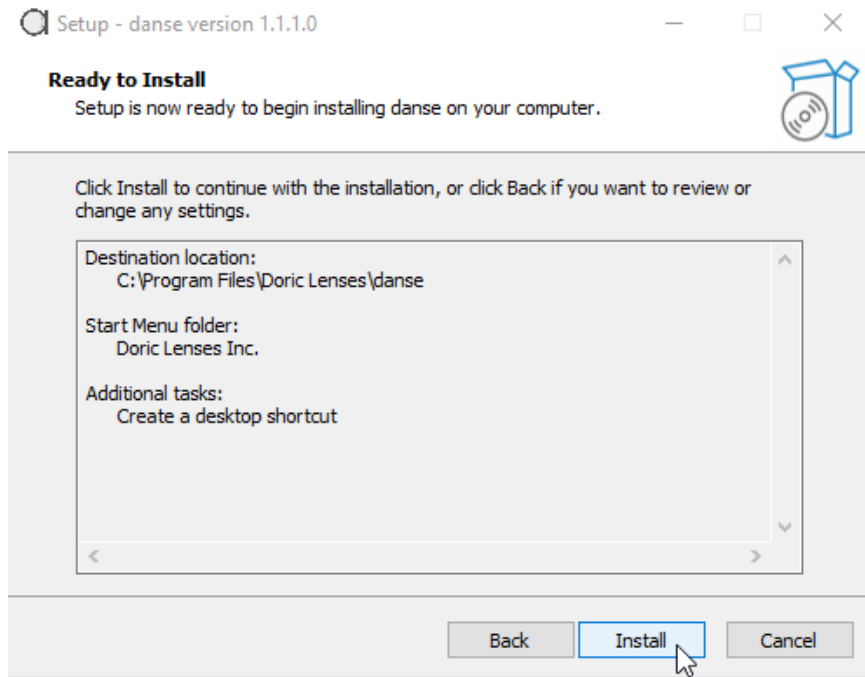


Figure 2.7: Ready to Install

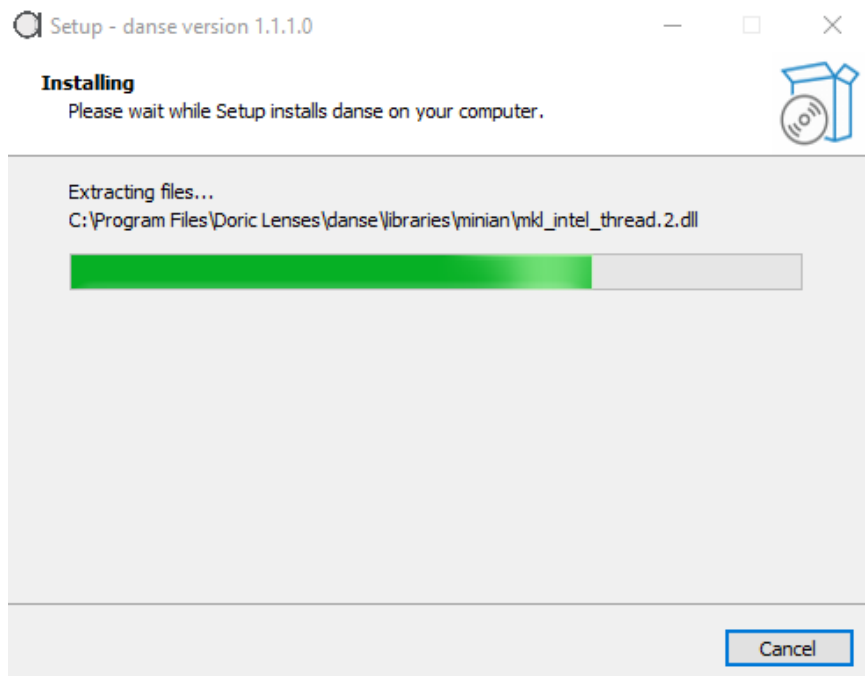


Figure 2.8: Installing, loading

The message in figure 2.9 will show up when the installation is done. Select **Next** one last time.

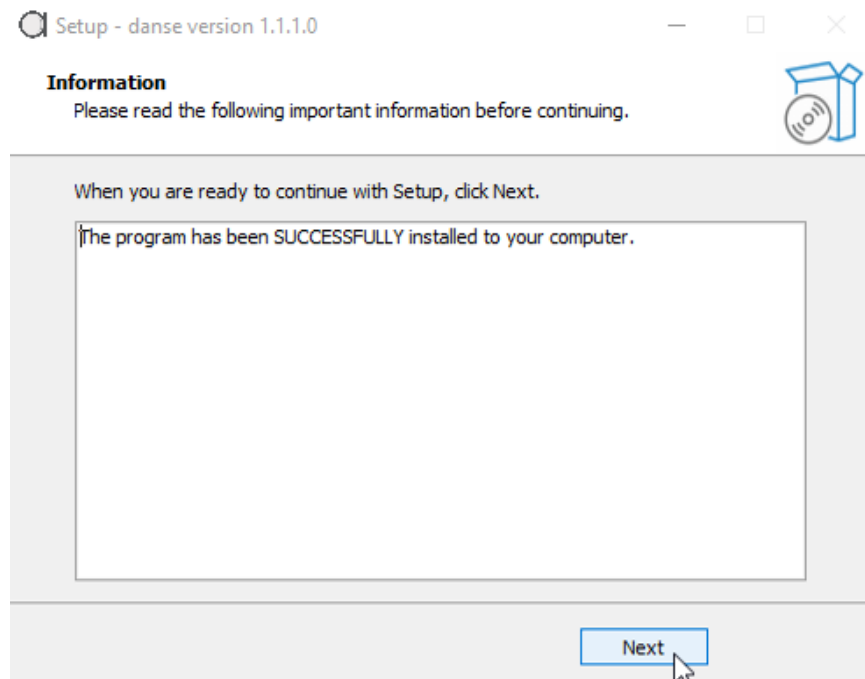


Figure 2.9: Successful Installation Message

9. Click **Finish** to exit the setup. If the **Launch** *danse*<sup>TM</sup> checkbox is enabled, the data analysis software will automatically open after closing the setup window.

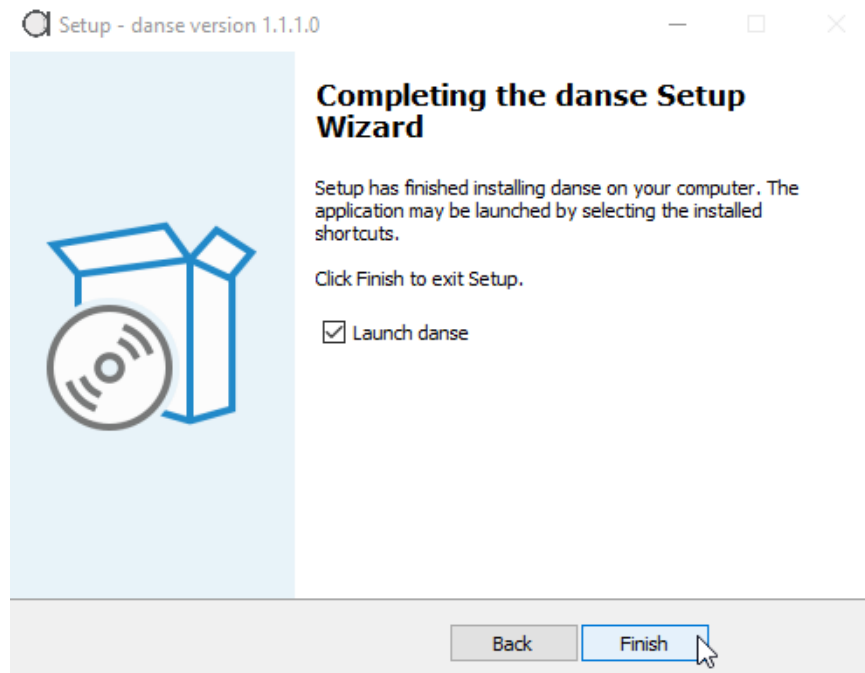


Figure 2.10: Launch *danse*<sup>TM</sup>

10. The software is ready for use.



## 2.2 Licence Activation

Once *danse*<sup>TM</sup> is installed, you must open the software to activate the purchased license.

1. Within *danse*<sup>TM</sup>, **select** *License(s)* from the **Help** drop-down menu, as in Fig. 2.11. This will open a **License** window (Fig. 2.12).

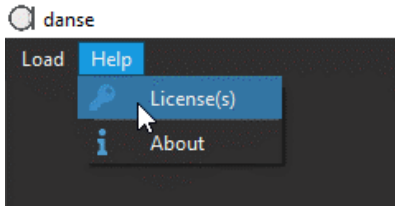


Figure 2.11: Open License Window

2. In the **License(s) window**, input the *License Key* in the text-box, then **select** *Activate* (Fig. 2.12).

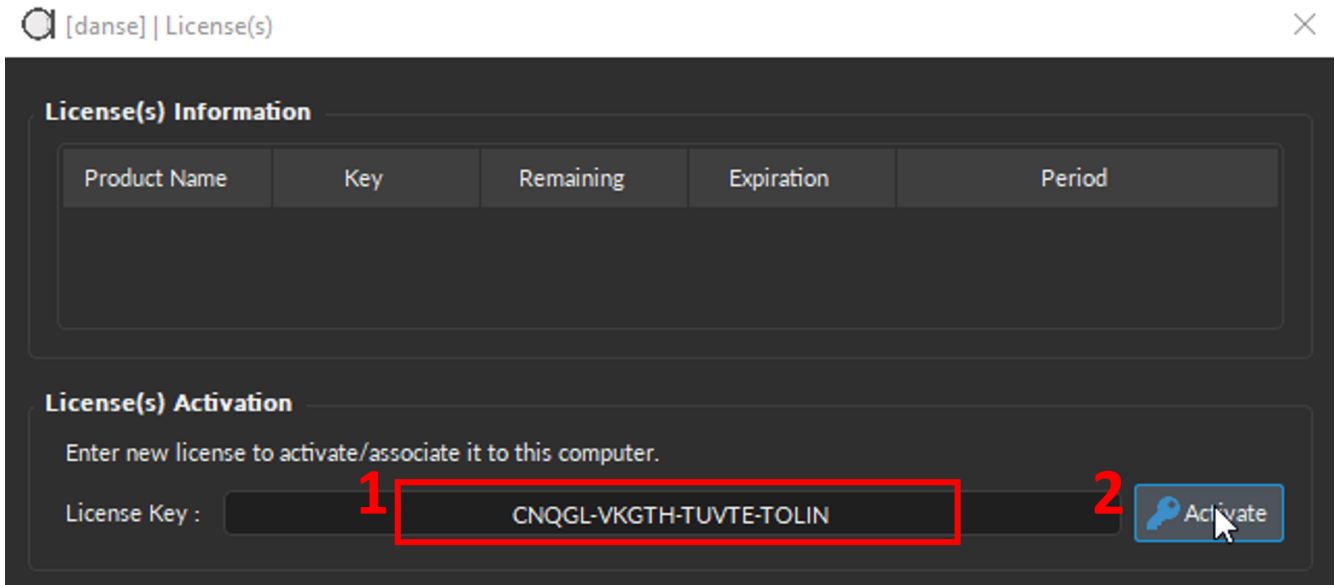


Figure 2.12: Input License key to activate the software

3. If the activation was successful, the pop-up window in Fig. 2.13 will appear. **Click** *OK* to start analyzing data or **Select** *Show Details* to display license information, such as in Fig. 2.14, including a number of days left in the license/trial period and the expiration date.

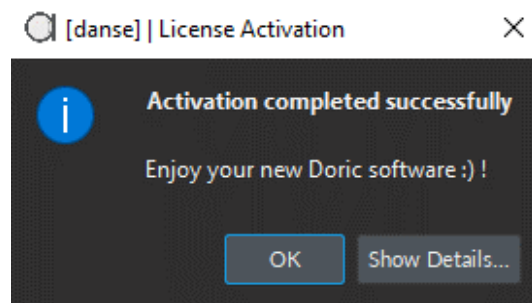


Figure 2.13: Successful Activation Message

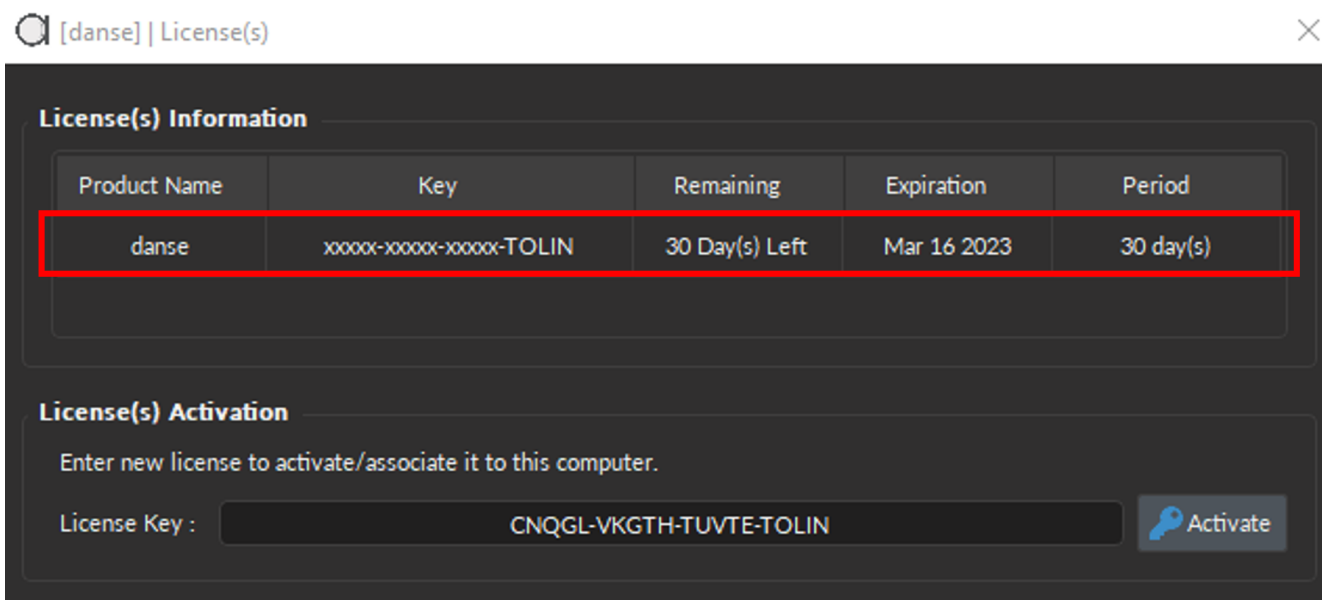


Figure 2.14: Licence Information

When the license is near its expiry date, the warning message in Fig. 2.15 will appear to remind users to renew the license. Enable the **Don't show again** checkbox to prevent the message from popping up again. Select **Show Details** to open the **License information** in Fig. 2.14.

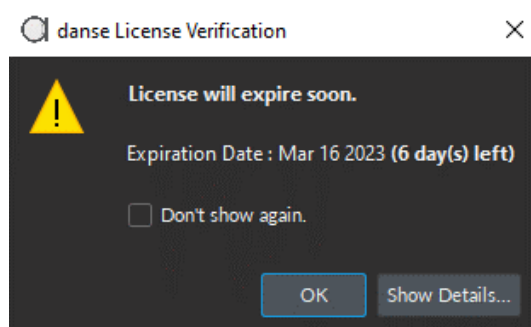


Figure 2.15: Licence Expiration Warning

## 2.3 Software Update

The easiest way to check for software updates and download the latest version *danse*<sup>TM</sup> is to use the *Doric Maintenance Tools* application, which can be **downloaded** and **installed** using the following [LINK](#).

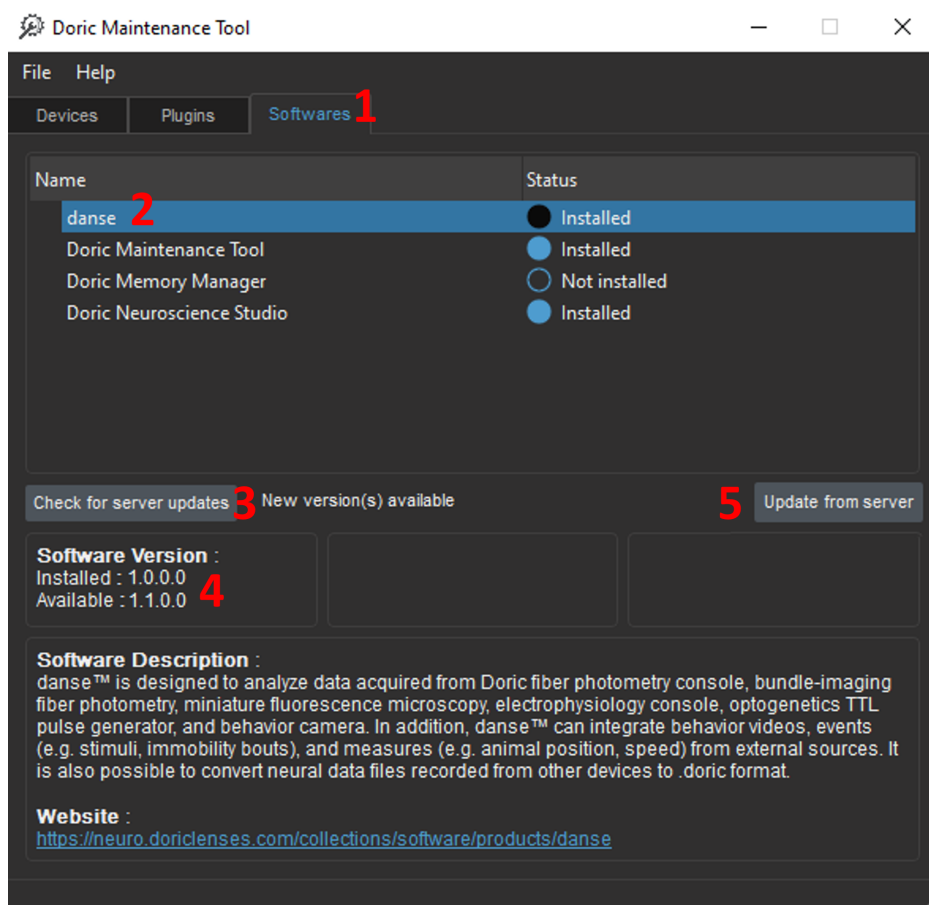


Figure 2.16: *Doric Maintenance Tool*, Update *danse*<sup>TM</sup>

The upgrade instructions are as follows (Fig. 2.16):

1. Once *Doric Maintenance Tools* is opened, **select** the **Software** tab (Fig. 2.16, 1).
2. Among the list of software, select **danse**<sup>TM</sup> (Fig. 2.16, 2).<sup>1</sup>



### **WARNING:**

If *danse*<sup>TM</sup> isn't one of the available options, you must first update *Doric Maintenance Tools*<sup>1</sup>.



3. Then **click** on **Check for server updates** (Fig. 2.16, 3).
4. The version displayed next to Available will be updated to the latest version available (Fig. 2.16, 4).
5. Click on **Update from server** to start updating to the available version (Fig. 2.16, 5). Go to Section 2.1 for the software installation instructions. Note that you will first need to uninstall the current version of *danse*<sup>TM</sup> (as in Fig. 2.2).

<sup>1</sup>You can update *Doric Maintenance Tools* by selecting it within the list of software (instead of *danse*<sup>TM</sup>), then following the same upgrade instructions above (Fig. 2.16, 3- 5).

## Getting Started

When initially opening *danse*<sup>TM</sup>, the only visible element of the software is the menu at the top (Fig. 3.1). Section 3.1 and 3.2, below, details the different drop-down options.



Figure 3.1: *danse*<sup>TM</sup> menu

### 3.1 Opening modules

The **Load** drop-down menu (Fig. 3.2) contains the following modules:

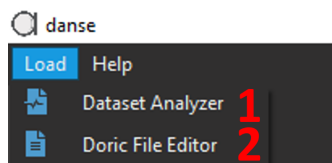


Figure 3.2: *danse*<sup>TM</sup> menu, Load

1. **Dataset Analyzer** (Fig. 3.2, 1) - Used to visualize, process, and analyze version 6 *.doric* datasets.
2. **Doric File Editor** (Fig. 3.2, 2) - Used to convert data files into version 6 *.doric* format, merge, split, and check configuration parameters.

### 3.2 Help functionalities

The **Help** drop-down menu (Fig. 3.3) contains the following items:

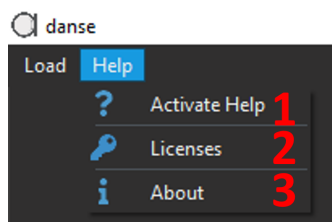


Figure 3.3: *danse*<sup>TM</sup> menu, Help

1. **Activate Help** (Fig. 3.3, 1) - certain functions within the software have embedded tips and help functionalities. If the question mark icon is displayed at the top of the window, such as in Fig. 3.4a. This question mark button must be selected to activate the tip functionalities. Mousing over any element within the window will show either the icon in Fig. 3.4b if a tip is available or the icon in Fig. 3.4c if no tip is available. Selecting the element will display the tip (Fig. 3.4d).

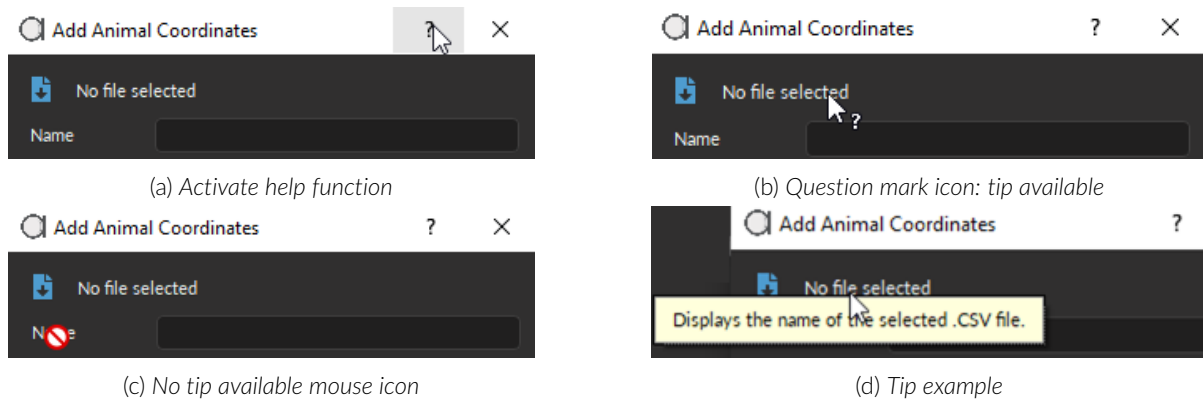


Figure 3.4: Help functionalities

2. **Licenses** (Fig. 3.3, 2) - Opens the License window (Fig. 2.14). See Section 2.2 for more details.
3. **About** (Fig. 3.3, 3) - Opens the **About danse<sup>TM</sup>** window in Fig. 3.5 and contains information about the software specification (Table 4.1). The **User system** column details the current computer's specs. If green, the user meets or exceeds the recommended specifications. If yellow, the parameters are between the minimum and recommended ones and will be red if below minimum requirements.



Figure 3.5: About danse<sup>TM</sup>

---

## Specifications

Table 4.1: *danse<sup>TM</sup> System Requirements*

<b>SPECIFICATIONS</b>	<b>MINIMUM</b>	<b>RECOMMENDED</b>
<b>Operating System</b>	Windows 10	Windows 10 or later
<b>CPU Core(s) Count</b>	4 cores / 8 logicals	8 cores / 16 logicals
<b>Memory (RAM)</b>	8 GB	16 GB
<b>Memory (Storage)</b>	5GB	5GB+

---

## Support

### 5.1 Contact us

For any questions or comments, do not hesitate to contact us by:

**Phone** 1-418-877-5600

**Web** [doriclenses.com/contact](https://doriclenses.com/contact)

**Email** [support@doriclenses.com](mailto:support@doriclenses.com)

The logo for Doric Lenses Inc. features the word "doric" in a lowercase, sans-serif font. The letter "o" is stylized with a white highlight on its left side, giving it a three-dimensional appearance as if it were a lens or a sphere.

© 2023 DORIC LENSES INC

357 rue Franquet - Quebec, (Quebec)

G1P 4N7, Canada

Phone: 1-418-877-5600 - Fax: 1-418-877-1008

[www.doriclenses.com](https://www.doriclenses.com)