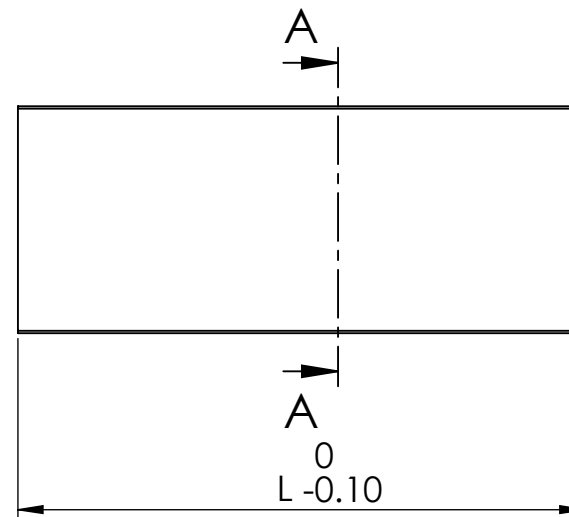
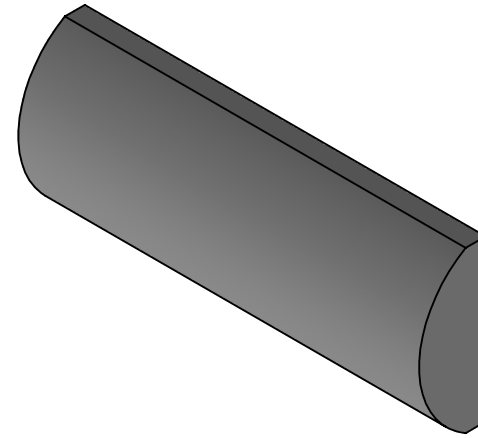


SECTION A-A
SCALE 3 : 1



Acylindrical Equation

$$Z(y) = \frac{c^2 y^2}{1 + \sqrt{1 - (k + 1)c^2 y^2}} + \sum_{i=2}^8 A_{2i} y^{2i}$$

Acylindrical Coefficients

	S1	S2
R	4.9295	Plano
c	0.2028	
k	-0.5378	
A ₄	0.0000	
A ₆	-1.9084 E-6	
A ₈	4.6703 E-8	
A ₁₀	-2.6091 E-9	

Sagittal Distances of Acylindrical Surface

Y (mm)	Z(mm)	
	S1	S2
0.0	0.000000	-
1.0	-0.101915	-
2.0	-0.413633	-
3.0	-0.954451	-
4.0	-1.762216	-
5.0	-2.904291	-

All unspecified surfaces-fine ground

S1		Material/Lens Data		S2	
Radius of Curvature	4.9295 mm	Glass Type	BK7	Radius of Curvature	Plano
Clear Aperture	8.0 mm	n _d / V _d	1.51680 / 64.17	Clear Aperture	8.0 mm
Irregularity	< 1 μm P-V	Focal length	9.686 mm ± 1%	Irregularity	λ/4 over CA
Centering	Tilt < 0.25°	Numerical Aperture	0.40	Centering	Tilt < 0.25°
Surface Quality	40-20	Design wavelength	905 nm	Surface Quality	40-20
Coating	None			Coating	None

Dimensions in mm
For Information Purposes Only

PROPRIETARY
THE INFORMATION CONTAINED IN THIS DRAWING IS THE SOLE PROPERTY OF Doric Lenses Inc.. ANY REPRODUCTION IN PART OR AS A WHOLE WITHOUT THE WRITTEN PERMISSION OF Doric Lenses Inc. IS PROHIBITED.

DO NOT SCALE DRAWING

doric

doriclenses.com

TITLE:

ACL_PCX_INF_BK7_9.686

DWG. NO.

D141-0367-000

08/09/2015